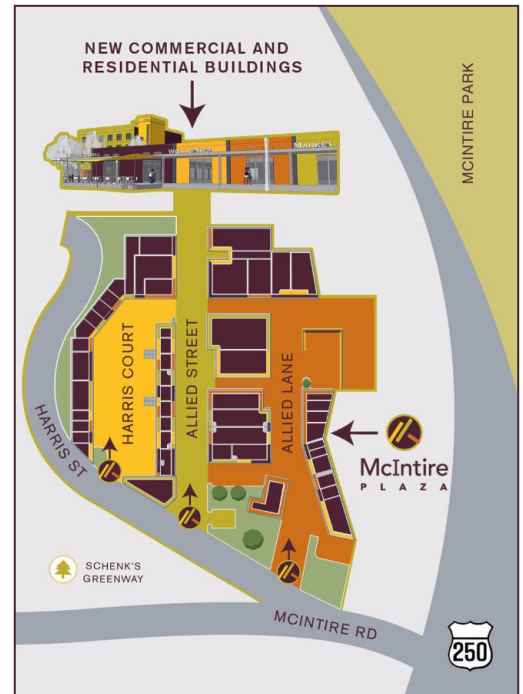


THE CIRCLE AT MCINTIRE PLAZA

1745-1747 ALLIED STREET

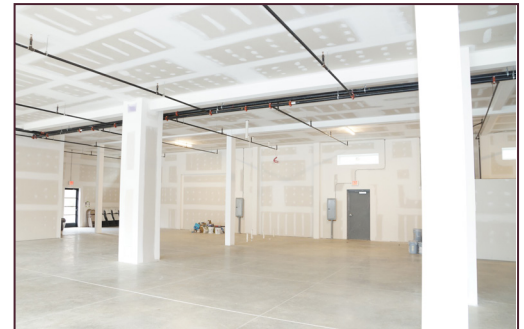


Brand new commercial space available now for build-out.

This is an opportunity to join a well-established community including Circa, C-ville Coffee, Great Harvest Bread Company, Habitat Store, and many others. Square footage available to lease, 1,875 - 22,000. Rent is starting at \$14 per square foot for this fantastic location.

Ting friendly.

PROPERTY TYPE:	Retail-Commercial, Mixed-use
CONTIGUOUS SPACE:	1,418-5,500 SF
LEASE RATE:	\$18 SF
TOTAL MONTHLY RENT:	\$2,127-\$8,250
LEASE TYPE:	Gross
GROSS BUILDING AREA:	5,500 SF
TENANCY:	Multiple Tenants
YEAR BUILT:	2018
TRAFFIC/VEHICLE COUNT:	28,000



McIntire
P L A Z A

MANAGED BY WOODARD PROPERTIES

FOR MORE INFORMATION:

Tanashia Washington

Tanashia@woodardproperties.com

434.971.8860 • WOODARDPROPERTIES.com